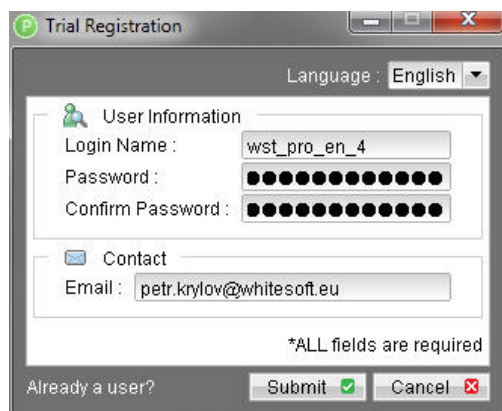


## CONTENT

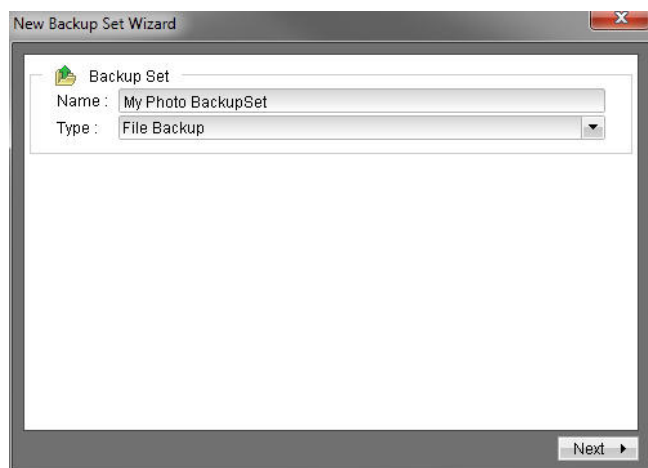
<b>Setting up an initial back up in Whitestore PRO</b> .....	<b>2</b>
Saving data on a local disc .....	4
<b>Setting up an initial back up in Whitestore LITE</b> .....	<b>7</b>
Setting up parameters of an initial back up by editing 'SeedLoad.bat' file .....	8
<b>Create archive back up using 7-Zip</b> .....	<b>10</b>

## SETTING UP AN INITIAL BACK UP IN WHITESTORE PRO

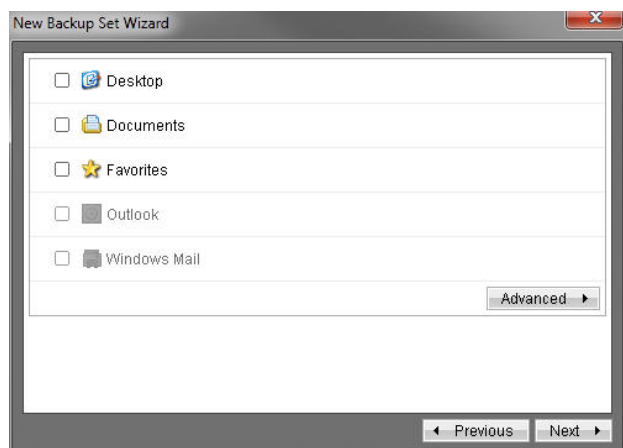
After installing the backup application Whitestore Pro, enter your new username, password and e-mail address and press the button [Submit]. Have you previously registered and want to log in to your existing account? Then click the bottom left inscription “Already a user?” and enter your existing username and password.



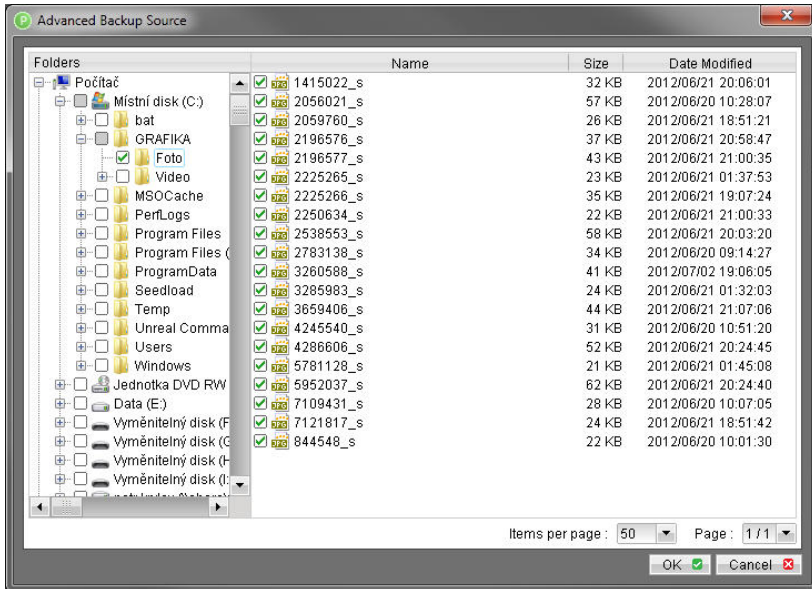
Enter a name for your backup set (overwrite the default name) and select a type of backup. Then press the button [Next].



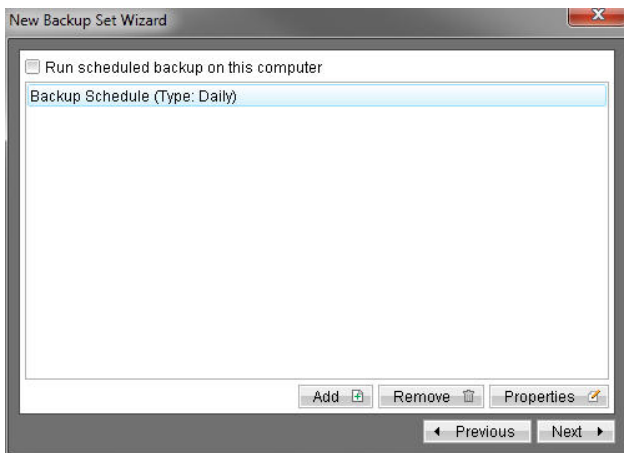
You can select one or more predefined folders in the next dialog window. If you want to select specific folders or files, press the button [Advanced].



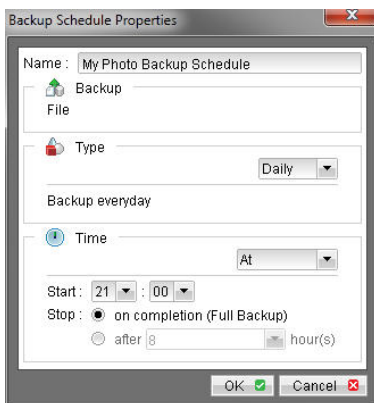
Select folders and files you wish to back up and press the button [OK].



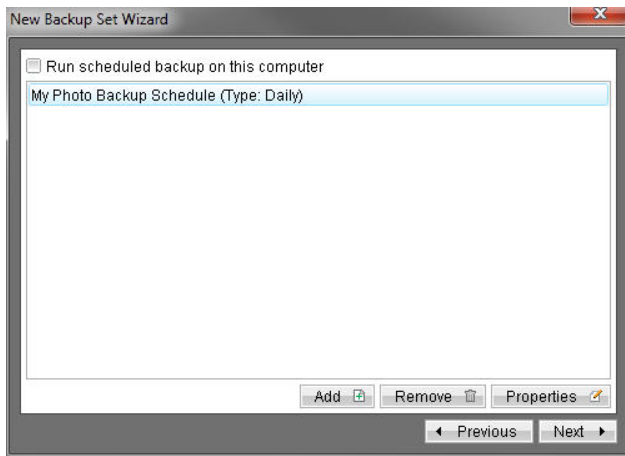
In the next dialog window uncheck 'Run scheduled backup on this computer' and press the button [Properties].



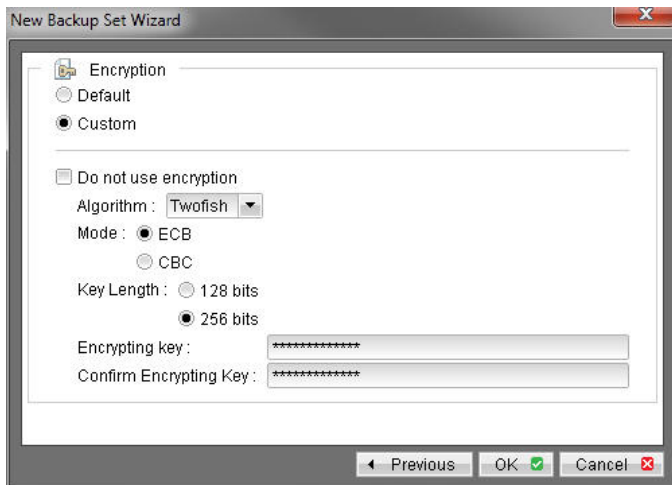
Enter a name of your backup schedule and other parameters. Press the button [OK].



Press the button [Next] to continue.



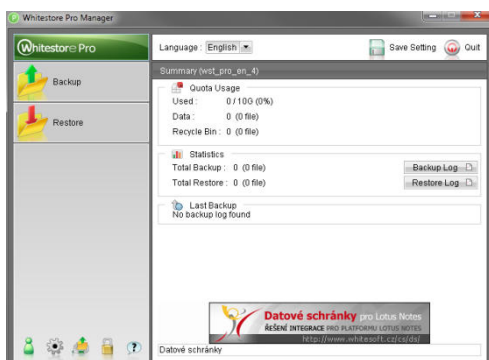
For Encryption choose the option 'Custom'. Enter your Encryption key. Press the button [OK] to continue.



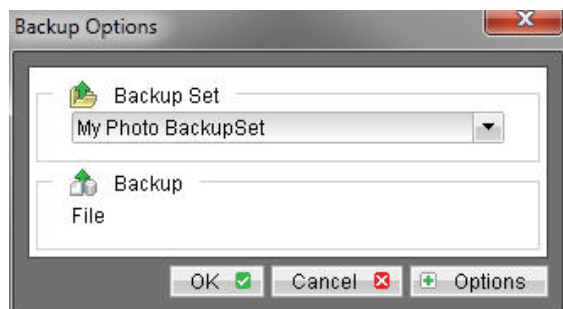
**IMPORTANT!** Do remember this Encryption key carefully. It is a necessity for decryption of the backup in case of data recovery.

## Saving data on a local disc

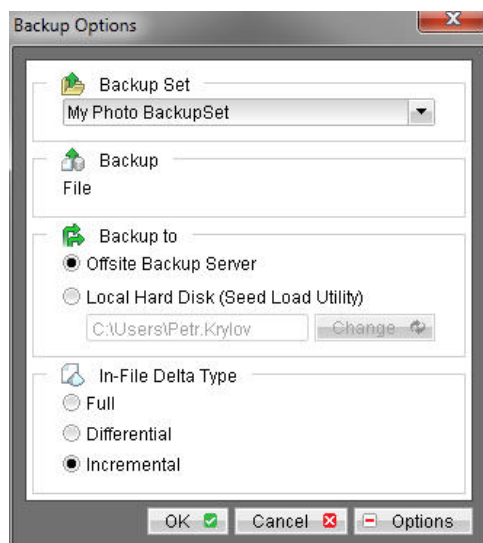
Press the button [Backup] in the left panel.



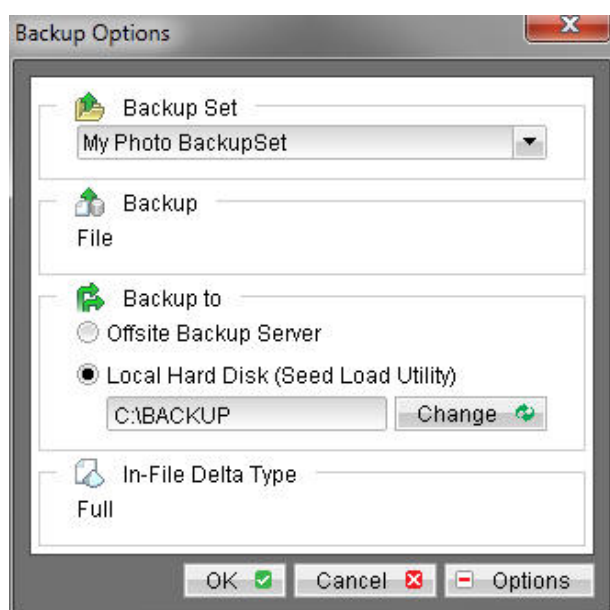
In the next dialog window, select the backup set you wish to use for your initial backup (Seed backup) and press the button [Options].



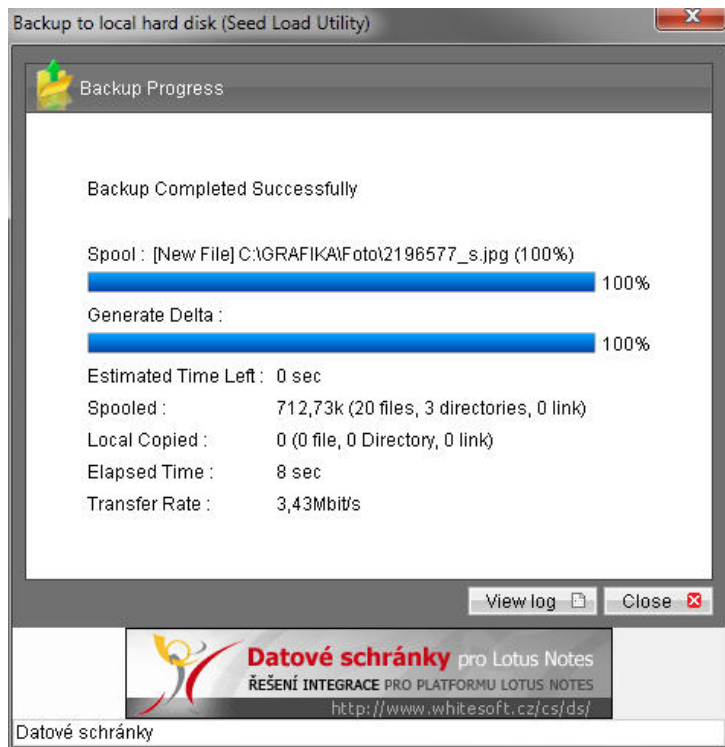
Select the option “Local hard disc (Seed Load Utility)” in the “Backup to” section.



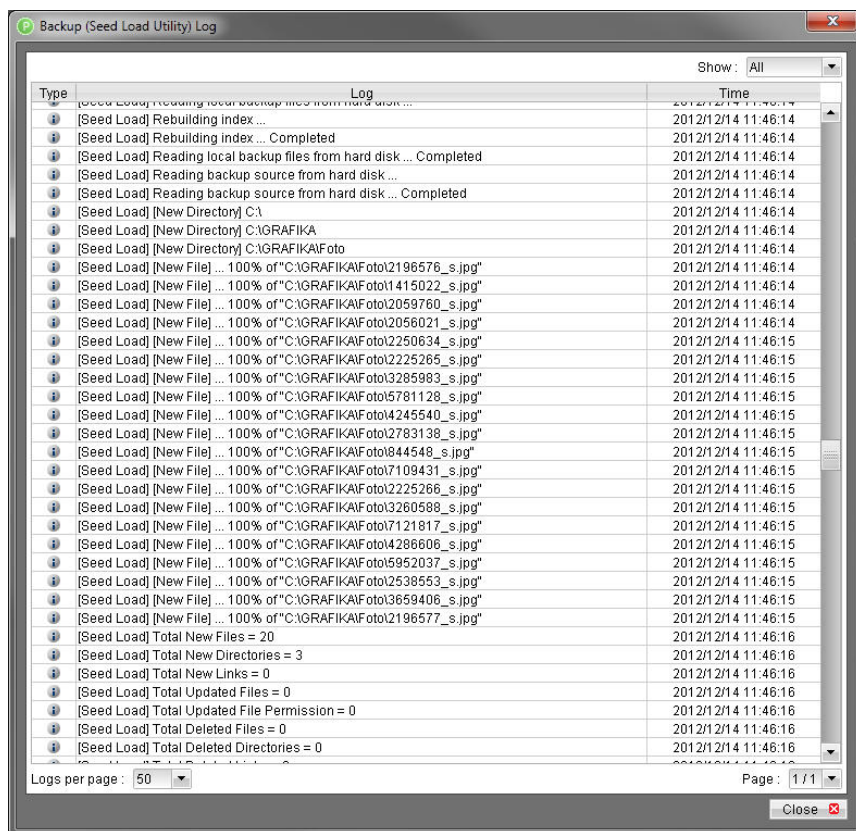
Press the button [Change] to select a place on the disc where will be the backup saved. Press the button [OK].



The files will be saved to the local disc and location selected.

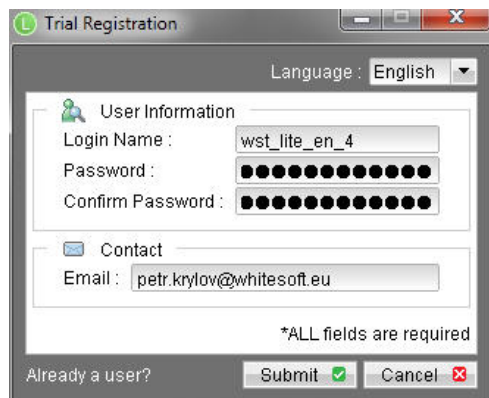


To have the process under control, you can check the initial backup process with the button [View log].

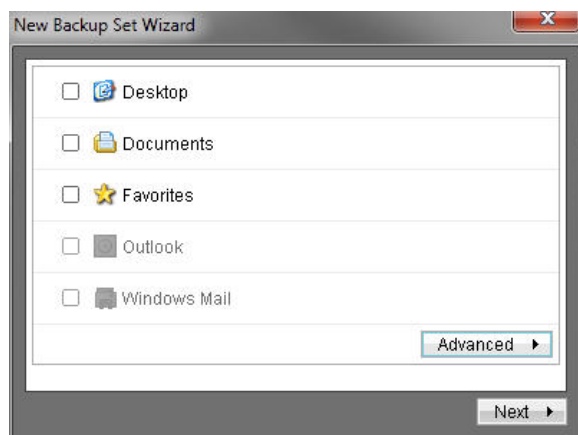


## SETTING UP AN INITIAL BACK UP IN WHITESTORE LITE

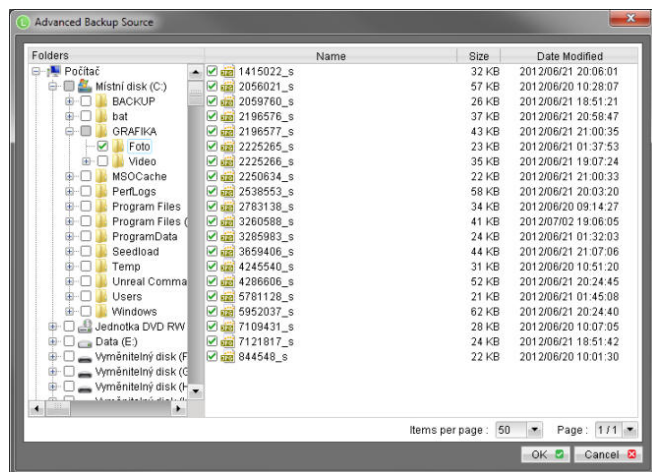
After installing the backup application Whitestore Lite, enter your new username, password and e-mail address and press the button [Submit]. Have you previously registered and want to log in to your existing account? Then click the bottom left inscription “Already a user?” and enter your existing username and password.



You can select one or more predefined folders in the next dialog window. If you want to select specific folders or files, press the button [Advanced].



Select folders and files you wish to back up and press the button [OK].



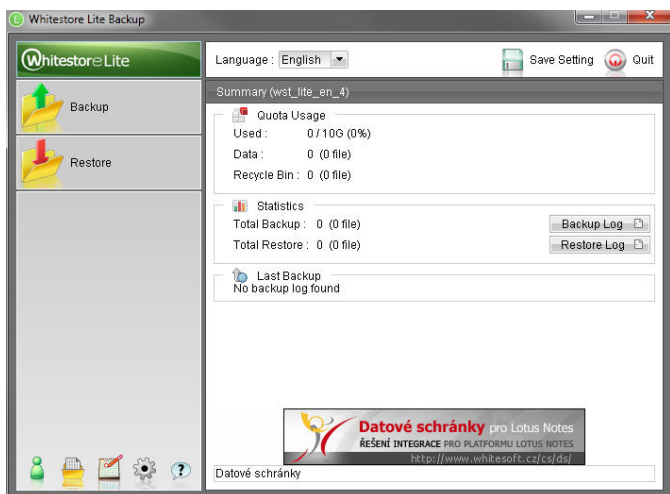


For Encryption select the option 'Encryption key' and type it in. Press the button [OK] to continue.



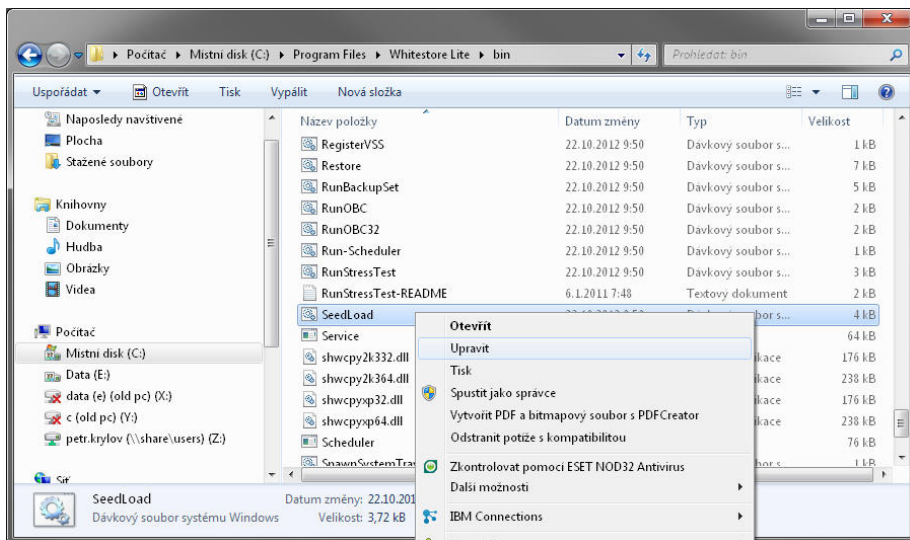
**IMPORTANT!** Do remember this Encryption key carefully. It is a necessity for decryption of the back up in case of data recovery.

Basic settings necessary for creation of an initial backup are ready.



## Setting up parameters of an initial back up by editing 'SeedLoad.bat' file

Creation of an initial backup itself will be done by editing and running of the file SeedLoad.bat.





In case of standard installation, Whitestore Lite is installed to the folder 'Program Files' on the C:\ drive. SeedLoad.bat is placed in the folder 'bin'.

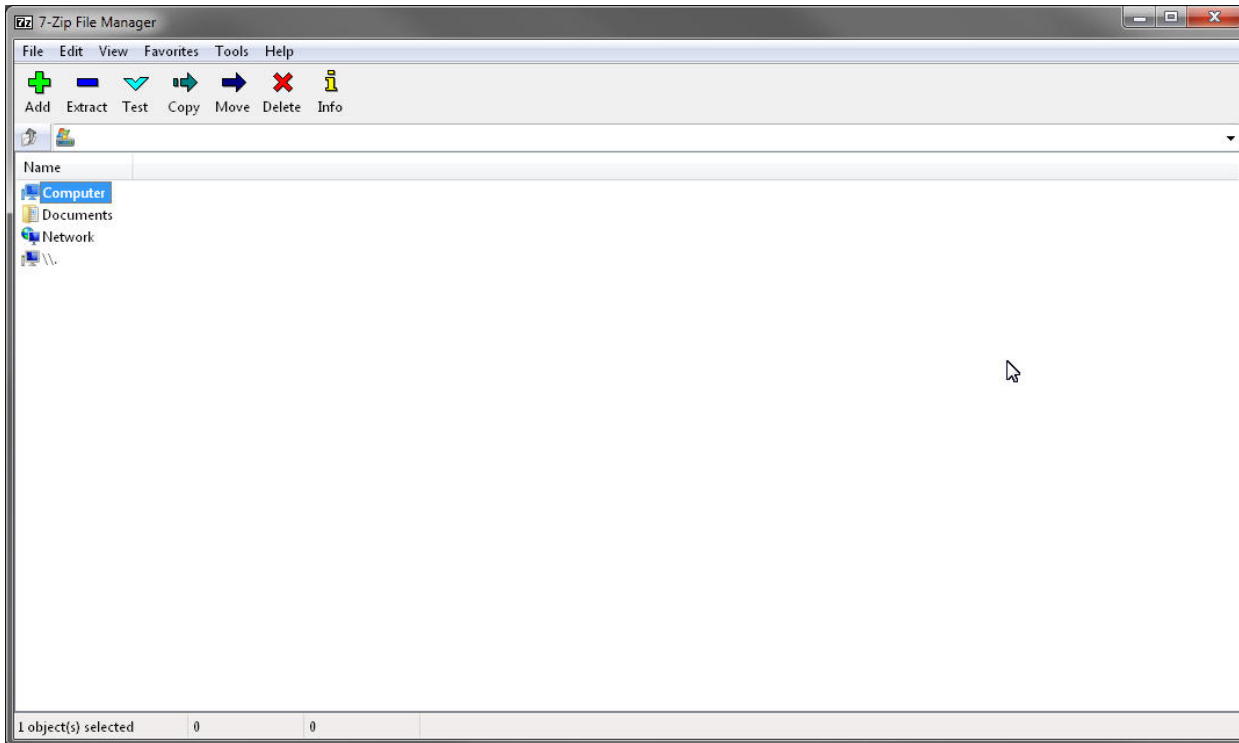
Standard localization *c:\Program Files\Whitestore Lite\bin\SeedLoad.bat*

Click the right mouse button on the file and select the option 'Edit'.

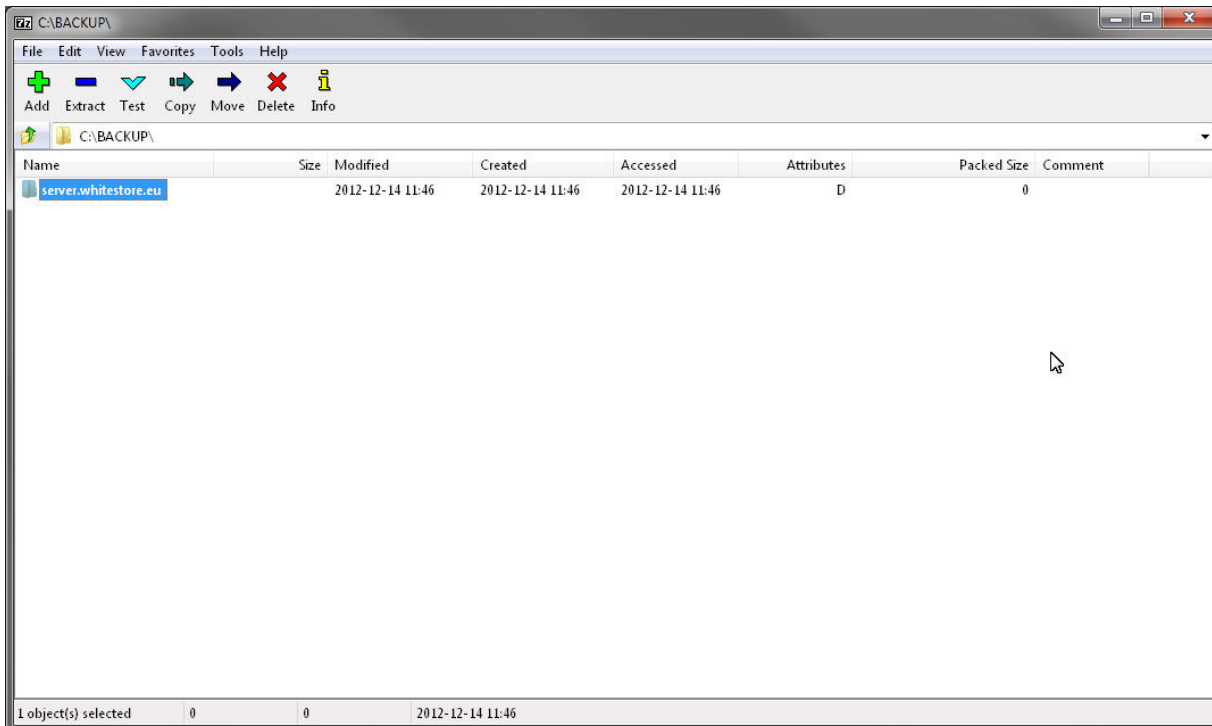
You can edit the address where the initial backup will be placed on the line *SET OUTPUT\_DIR="C:\Seedload.* If you do not change it, it will be placed on the C:\ drive into the folder 'Seedload'. Leave the other parameters unchanged. Save the file and run it. The initial backup will be placed to the selected location.

## CREATE ARCHIVE BACK UP USING 7-ZIP

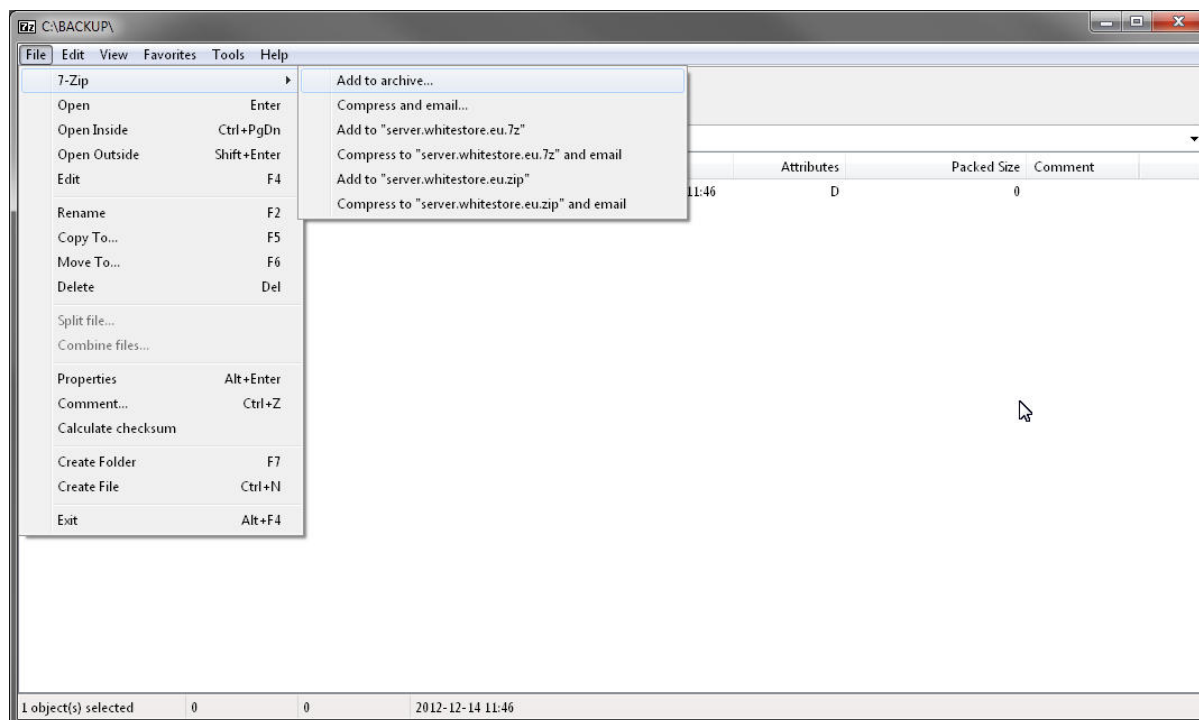
Install and run the application 7-Zip. It can be downloaded here <http://www.7-zip.org/>



In the main window, select the file in which the backup is stored (in this case it is the folder BACKUP on C:\ drive).

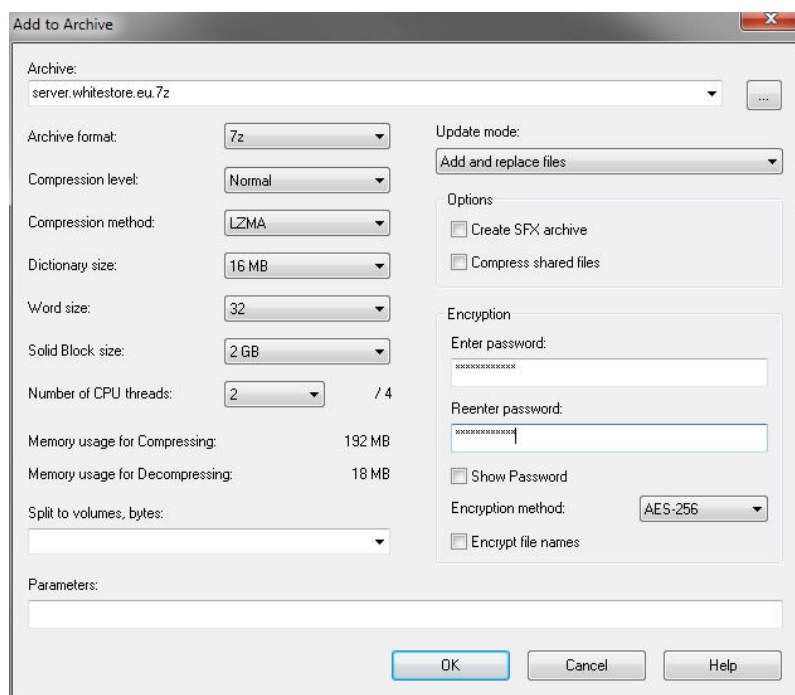


Click to select the folder 'server.whitestore.eu'. Then choose the option 'Add to archive...' in the menu [File] - [7-Zip].



In the menu of the item 'Block size' select the maximum size of archive file. If the total data size is larger, it will be divided into several archive files based on the selected block size. Encode your archive using a password in 'Encryption' and press the button [OK].

Note: If you use a USB stick or a portable external hard disc to transfer data, it must be formatted in NTFS. Older formatting style FAT32 does not support saving of files larger than 4 GB.



At this moment you have already created an archive with one or more files with regard to the data size and block size (see above). Copy the file(s) to a portable data medium (USB stick, external hard disc).

Archive can be delivered:

- Personally, after prior agreement
- By post, on any medium which will be sent back to you on your request
- Sending to our server using high speed Internet line in other location

Then tell us your 7-Zip archive password by phone in order to put the files and folders on servers.